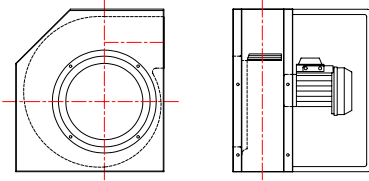


Backward Curved Centrifugal Fan for Aeration



Chief Industries UK Limited

Portable Low Volume Fans



These efficient portable fan units come with either 1 phase 220/240v 50hz or 3 phase 380/415v 50 hz motor, carry handle, 150mm or 200mm dia outlet spigot, (as specified) inlet and outlet guards. Supplied as standard paint finish.

Fan Performance

Model	Motor Size Kw	Outlet Spigot Dia.	Volume	Pressure s.w.g.			
				1" 25mm	2" 50mm	3" 75mm	4" 100mm
CF8-0.55	0.55	150mm	CFM	810	780	690	-----
1 phase			m. ³ /hour	1376	1325	1172	-----
3 phase			m. ³ /hour	1376	1325	1172	-----
CF90.75	0.75	150mm	CFM	1150	1000	620	-----
1 phase			m. ³ /hour	1954	1699	1053	-----
3 phase			m. ³ /hour	1954	1699	1053	-----
CF9-0.75	0.75	150mm	CFM	1150	1000	620	-----
1 phase			m. ³ /hour	1954	1699	1053	-----
3 phase			m. ³ /hour	1954	1699	1053	-----
CF9-1.1	1.1	150mm	CFM	1500	1420	1310	1050
1 phase			m. ³ /hour	2548	2413	2226	1784
3 phase			m. ³ /hour	2548	2413	2226	1784
CF9-1.1	1.1	150mm	CFM	1500	1420	1310	1050
1 phase			m. ³ /hour	2548	2413	2226	1784
3 phase			m. ³ /hour	2548	2413	2226	1784
CF9-1.5	1.5	200mm	CFM	1790	1690	1540	1350
1 phase			m. ³ /hour	3041	2871	2616	2294
3 phase			m. ³ /hour	3041	2871	2616	2294
CF9-1.5	1.5	200mm	CFM	1790	1690	1540	1350
1 phase			m. ³ /hour	3041	2871	2616	2294
3 phase			m. ³ /hour	3041	2871	2616	2294
CF9-2.2	2.2	200mm	CFM	2040	1875	1700	1540
1 phase			m. ³ /hour	3466	3186	2888	2616
3 phase			m. ³ /hour	3466	3186	2888	2616

This range of mobile fan (from 2.2kw – 5.5kw) has been developed specially for the aeration and cooling of grain – for aeration facilities that normally consume 15-30 cubic metres of air per tonne. These fans have a high air output and low energy consumption, as well as being maintenance free. Chief mobile fans are made of galvanised, enamelled sheet steel to ensure a long service life.

Mobile Low Volume Fans



Fan Performance

Model	Motor Size Kw	Volume	Pressure s.w.g.				
			4" 100mm	5" 125mm	6" 150mm	7" 175mm	8" 200mm
CST 2	2.2	CFM	3,532	3,120	2,649	-----	-----
		m.3/hr	6,000	5,300	4,500	-----	-----
CST 3	5.5	CFM	6,475	5,827	5,062	4,120	2,943
		m.3/hr	11,000	9,900	8,600	7,000	5,000
CST 4	7.5	CFM	7,824	7,416	7,063	6,475	5,945
		m.3/hr	13,300	12,600	12,000	11,000	10,100

Centrifugal High Pressure Fans



Chief backward curved centrifugal fans are produced in 1,750 rpm models for high static pressure applications and 3,500 rpm models for very high static pressure uses and offer quite, dependable performance.

These fans are available in sizes ranging from 762mm to 838mm impeller with power from 7.5kw to 30kw 3 phase operation. Dynamically and statically balanced wire welded impellers are standard. Larger models & duplex arrangements are also available.

Model	Motor		Volume	Pressure s.w.g.							
	kW	HP		2" 50mm	3" 75mm	4" 100mm	5" 125mm	6" 150mm	7" 175mm	8" 200mm	
CF30-10	7.5	10	CFM	12920	12180	11285	10170	8340	-----	-----	
			m.3/hour	21951	20694	19173	17279	14170	-----	-----	
CF30-15	11	15	CFM	18825	17745	16440	14815	12150	-----	-----	
			m.3/hour	31984	30149	27932	25171	20643	-----	-----	
CF33-20	15	20	CFM	21500	20490	19420	18275	16770	14550	-----	
			m.3/hour	36259	34813	32995	31050	28493	24721	-----	
CF33-25	18.5	25	CFM	26500	25260	23935	22530	20670	17930	-----	
			m.3/hour	45024	42917	40666	38279	35119	30463	-----	

TECHNICAL DATA SHEET TDS-200



Chief Industries UK Limited
 Beckingham Business Park, Maldon, Essex. CM9 8LZ. ENGLAND
 Tel: 00 44 (0) 1621 868944 Fax: 00 44 (0) 1621 868955
 e-mail: info@chief.co.uk www.chief.co.uk

All capacities and dimensions are nominal. Due to our development policy prices and specification are subject to change without notice.

